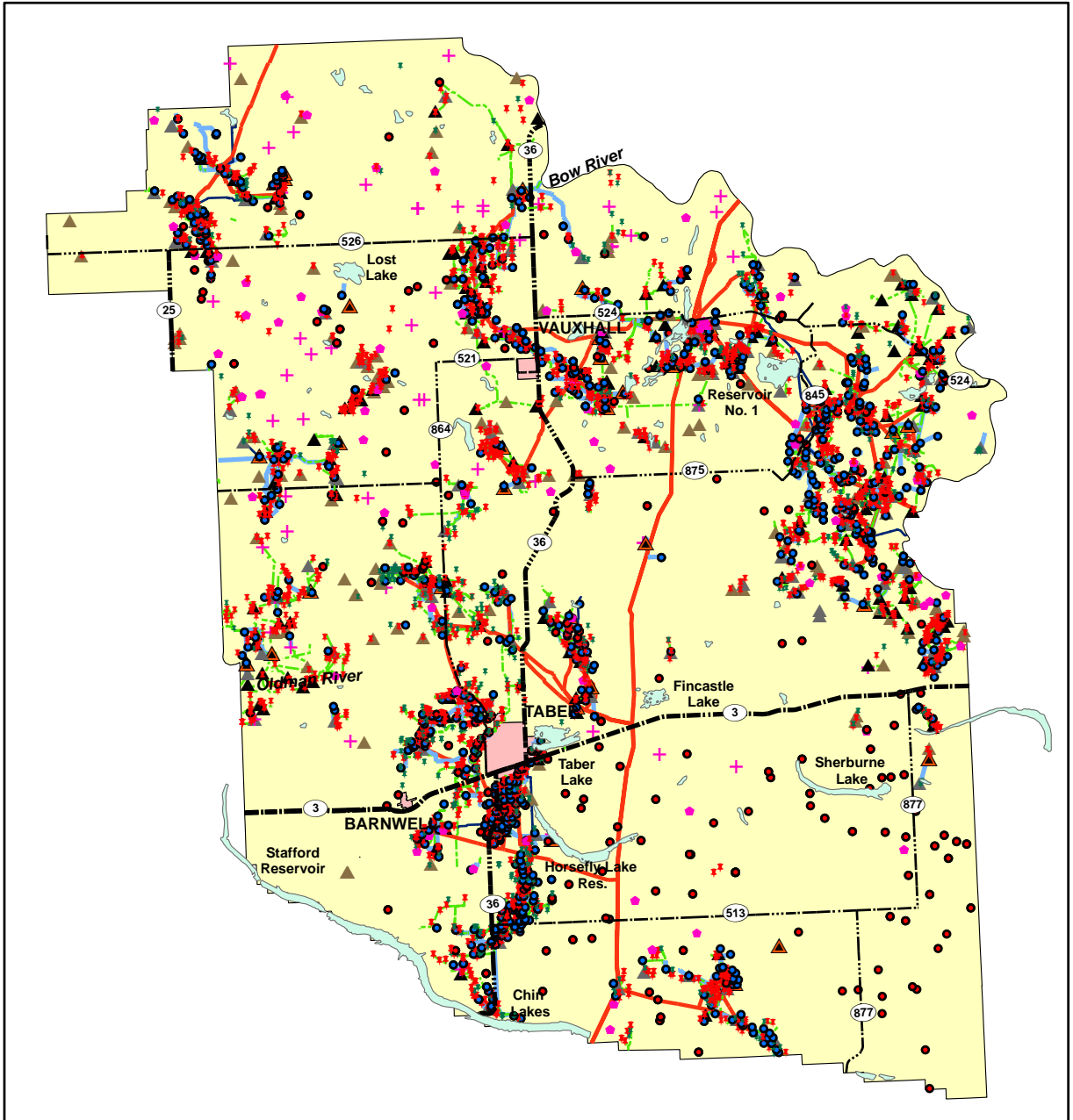


# MD of Taber Oil & Water Infrastructure



## Oil & Water Locations

### Roads

- +—+— Expressway / Highway
- Arterial

### Wells

- ✦ Flowing Oil
- ✦ Suspended Oil
- Location
- Miscellaneous
- Water

### Facilities

- ▲ Oil Single Battery
- ▲ Oil Multi Battery
- ▲ Oil Satellite
- + Compressor Station
- ▲ Inj/Disp Water

### Pipelines

- Crude Oil
- Oil Well Effluent

### Fresh Water

- Salt Water