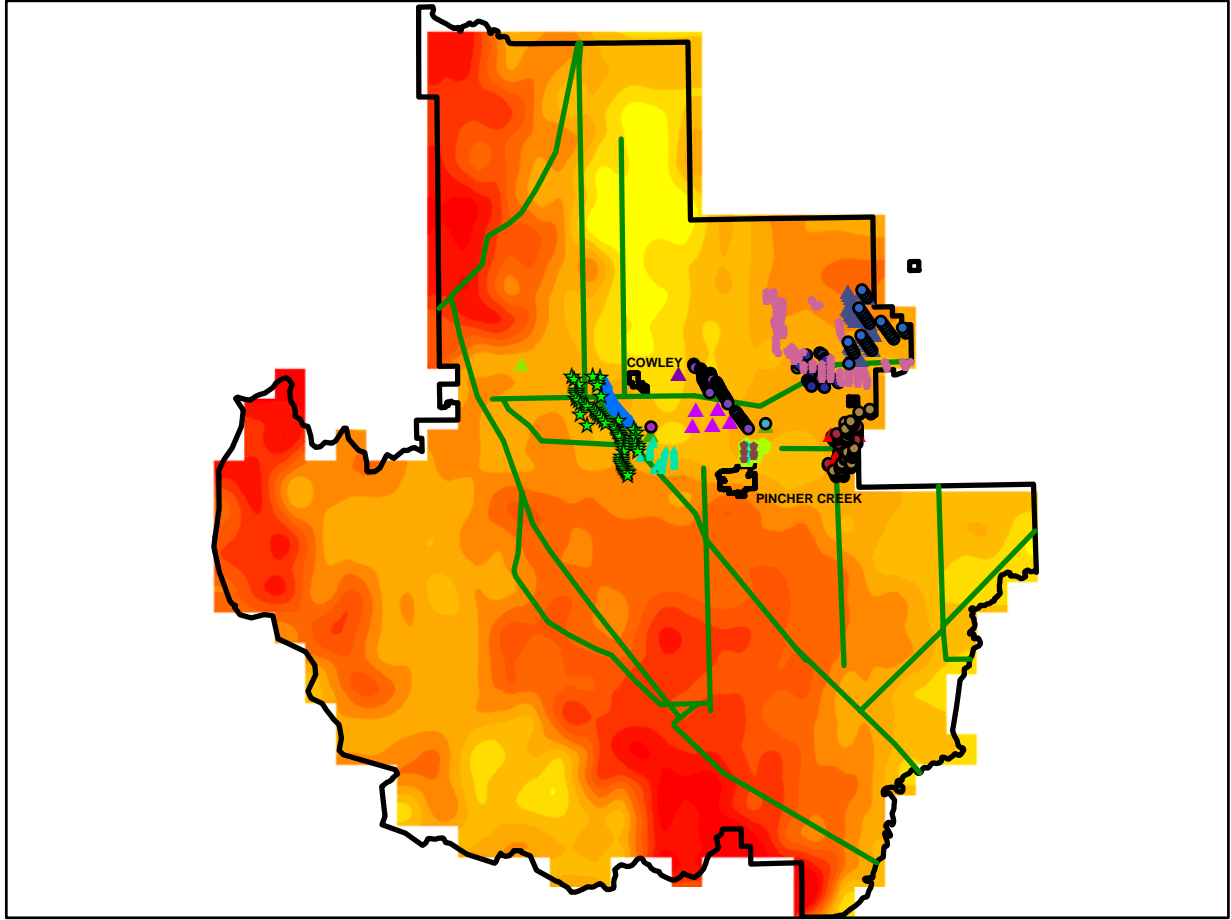


# MD of Pincher Creek Wind



## MD of Pincher Creek Wind

### Turbines

#### Company, Status

- Alberta Wind Energy Corp - Oldman River Phase 1-Approved-Not Installed
- Alberta Wind Energy Corp - Oldman River Phase 2-Approved-Not Installed
- ◆ Benign Energy - 4 Corners Option A - Under Application
- ◆ Benign Energy - 4 Corners Option B - Under Application
- ◆ Benign Energy - 4 Corners Option C - Under Application
- ◆ Benign Energy - Heritage - Under Application
- Benign Energy - Kettles Hill Expansion - Under Application
- ▲ Benign Energy - Kettles Hill - Approved-Installed
- Benign Energy - Kettles Hill-Approved-Not Installed
- ▲ Canadian Hydro Developers - Cowley Ridge - Approved-Installed
- ▲ Canadian Hydro Developers - Sinnott Farms - Approved-Installed
- ▲ Gilmour Small Scale WECS - Approved-Installed
- ★ GreenWind - Yagos Farm - On Hold
- ▲ Jeff Wearmouth - Approved-Installed
- ▲ Pat Dwyer - Approved-Installed
- Reid Farm-Approved-Not Installed
- ▲ Tallon Energy - Approved-Installed
- Tallon Energy-Approved-Not Installed
- ▲ Vision Quest - Castle River - Approved-Installed
- ▲ Vision Quest - Summerview Phase 1 - Approved-Installed
- Vision Quest - Summerview Phase 2-Approved-Not Installed
- Wind Power Inc - Castle Rock-Approved-Not Installed

### Power Transmission Lines Mean Wind Speed (m/s)

